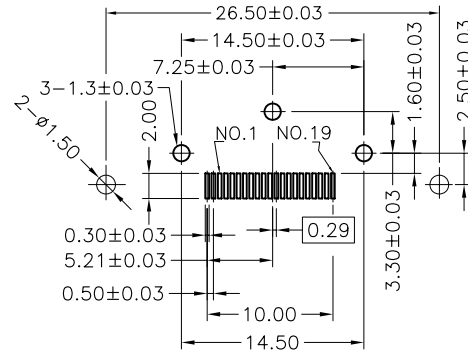
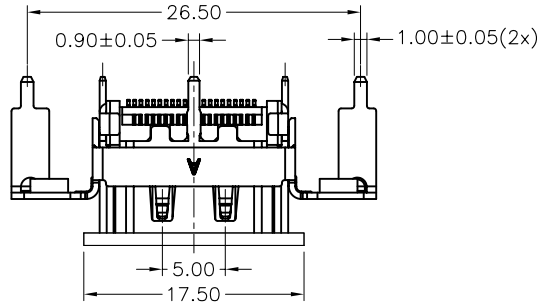
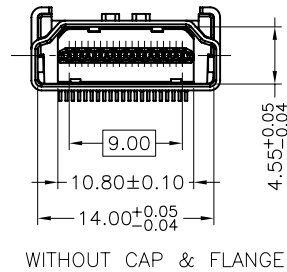
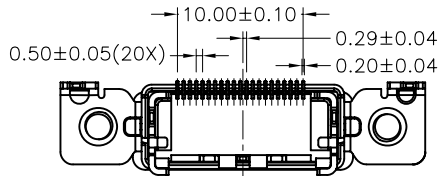
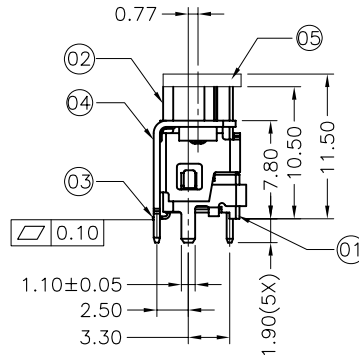
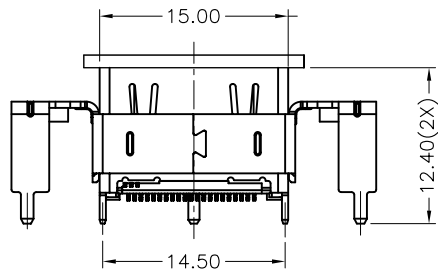
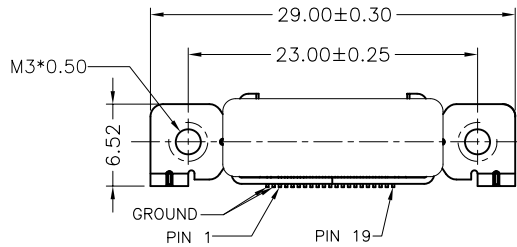


THE PART MEETS TECONN "GP001" COMPLIANCE

NOTE:
 1.MATERIAL:
 HOUSING AND BRACKET: HIGH TEMP.THERMOPLASTIC, UL 94V-0
 COLOR: BLACK.
 CONTACT: COPPER ALLOY, THICKNESS =0.20MM
 SHIELD: SPCC, THICKNESS=0.50MM
 2.FINISH:
 CONTACT: GOLD PLATING ON CONTACT AREA SEE NOTE
 80u"MIN ,MATTE TIN PLATED ON SOLDER TAILS
 50u" MIN. NICKEL UNDER PLATED OVER ALL
 SHIELD: 50u" MIN. NICKEL PLATED OVER ALL
 3.MECHANICAL CHARACTERISTICS
 INSERTION FORCE: 44.1N MAX
 EXTROCTION FORCE: 9.8N MIN, 39.2N MAX
 MATING CYCLE:10000 CYCLES
 4.ELECTRICAL CHARACTERISTICS
 RATING CURRENT: 0.5A
 RATING VOLTAGE: 40V
 CONTACT RESISTANCE: 10 MILLOHMS OHMS MAX
 (EXCLUDING CONDUCTOR RESISTANCE)
 INSULATION RESISTANCE:
 a, UNMATED: 100M OHMS MIN AT 500 VDC
 b, MATED: 10M OHMS MIN AT 150 VDC
 DIELECTRIC WITHSTANDING VOLTAGE: 300V AC/1MINUTE
 OPERATING TEMPERATURE: -20°C--+85°C
 STORAGE TEMPERATURE: -20°C--+65°C



RECOMMENDED PCB LAYOUT
 TOP VIEW(T=1.60mm)



WITHOUT CAP & FLANGE

05	CAP	H111994-A-A	LCP UL94V-0	BLACK	1
04	FLANGE	K111974-A-0N-B	SPCC T=0.50	NICKEL UNDER PLATED 50u" Min.	1
03	CONTACT	T111974-A-XX-A	C2680 T=0.20	GOLD PLATING ON CONTACT AREA SEE PART NO. 80u"MIN MATTE TIN PLATED ON SOLDER TAILS 50u" MIN. NICKEL UNDER PLATED OVER ALL	1SET
02	SHELL	K111972-A-0N-A	C2680 T=0.50	NICKEL UNDER PLATED 50u" Min. (WITH "TC"LOGO)	1
		K111972-N-0N-A	C2680 T=0.50	NICKEL UNDER PLATED 50u" Min. (WITHOUT "TC"LOGO)	
01	MOLDING	B111974-A-XX-A	LCP UL94V-0	BLACK	1
NO.	NAME	PART NO.	MATERIAL	FINISH/COLOR	Q' TY

X. ±	APPD:	TITLE:	
.X ± 0.25	CHKD:	HDMI-A/F 180° SMT H=10.50/21PIN/1.90 (INSERTMOLDING)	
.XX ± 0.20	DR:	PART NO:	
.XXX ±	UNITS:	SCALE:	
X* ± 3*	mm	NONE	DWG NO: CUSTOMER DRAWING
.X* ± 2*			SHEET:10F1 REV: B

B	TE2010-577	CHANGE FLANGE SPEC.▲	2010.07.27
A	TE2010-393	NEW RELEASE	2010.06.05
REV	ECN NO	DESCRIPTION	DATE